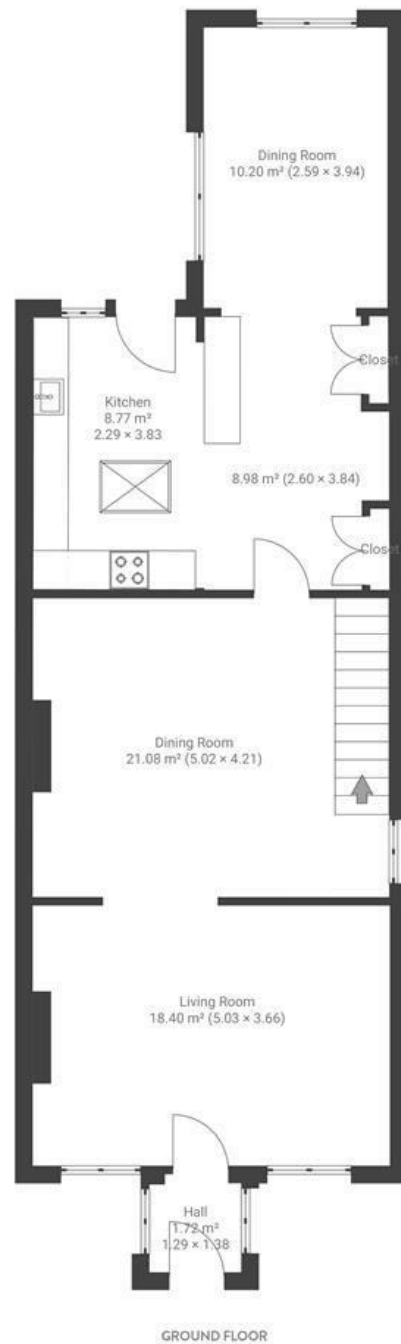


# Pendennis Park

## BRISLINGTON

APPROXIMATE FLOOR AREA  
147 SQM / 1585 SQFT



Boardwalk

# Pendennis Park

, BRISTOL

£

£485,000



BS4 4JL

zzz

3 Bedrooms



2 Bathrooms

"When we first viewed our house we were amazed at how much space and light there was, so we put an offer in straight away. We have loved living here so much and have really enjoyed spending long summer evenings in the peaceful garden. It's been wonderful raising our child here and we have spent a lot of time in our local parks as well as exploring nature in the Nightingale Valley and beyond. There are a number of cafes and a deli nearby, as well as The Langton pub which serves delicious roast dinners. We have developed close ties with other families in the area and have been lucky to have such kind and helpful neighbours."

